

Early Childhood Mental Health Collaborative Supporting Early Care and Education



Children in preschool are expelled at **three times the rate** of children in K-12.



Over one-quarter of Orange County early childhood educators have behavior or mental health concerns about a child they serve.

Over one-third have had to expel a child for problematic behavior.



Only one-third of children with mental health concerns get any treatment.

There is typically a **7 year delay** in getting a child established in support services. We can do better.

The Opportunity:

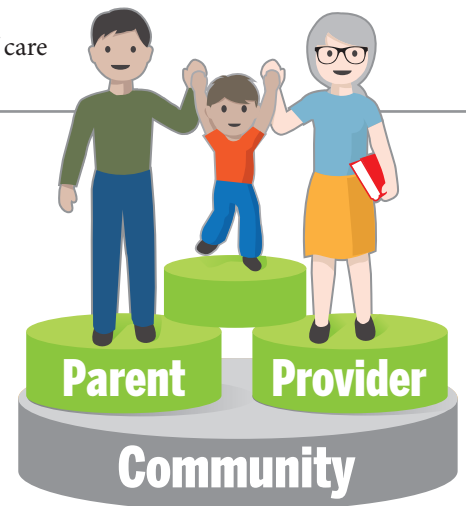
Reaching young children through caregivers and early educators

- Promote earlier identification of young children who need intervention
- Partner with providers to increase their capacity to support children and keep them in care
- Integrate Early Education Providers into the existing behavior and mental health system of care

What we are doing

The ECHMC was formed to address these issues collectively and in partnership with Orange County organizations that seek to make these opportunities a reality. Our group is working on programming to integrate:

- Provider Training
- Parent Education
- On-Site Consultation
- Referrals
- Clinical Assessment & Services



To learn more about this initiative and how your organization can get involved, please send your contact information to ecmh.oc@gmail.com

This initiative is supported through the Children and Families Commission of Orange County and committed private funders